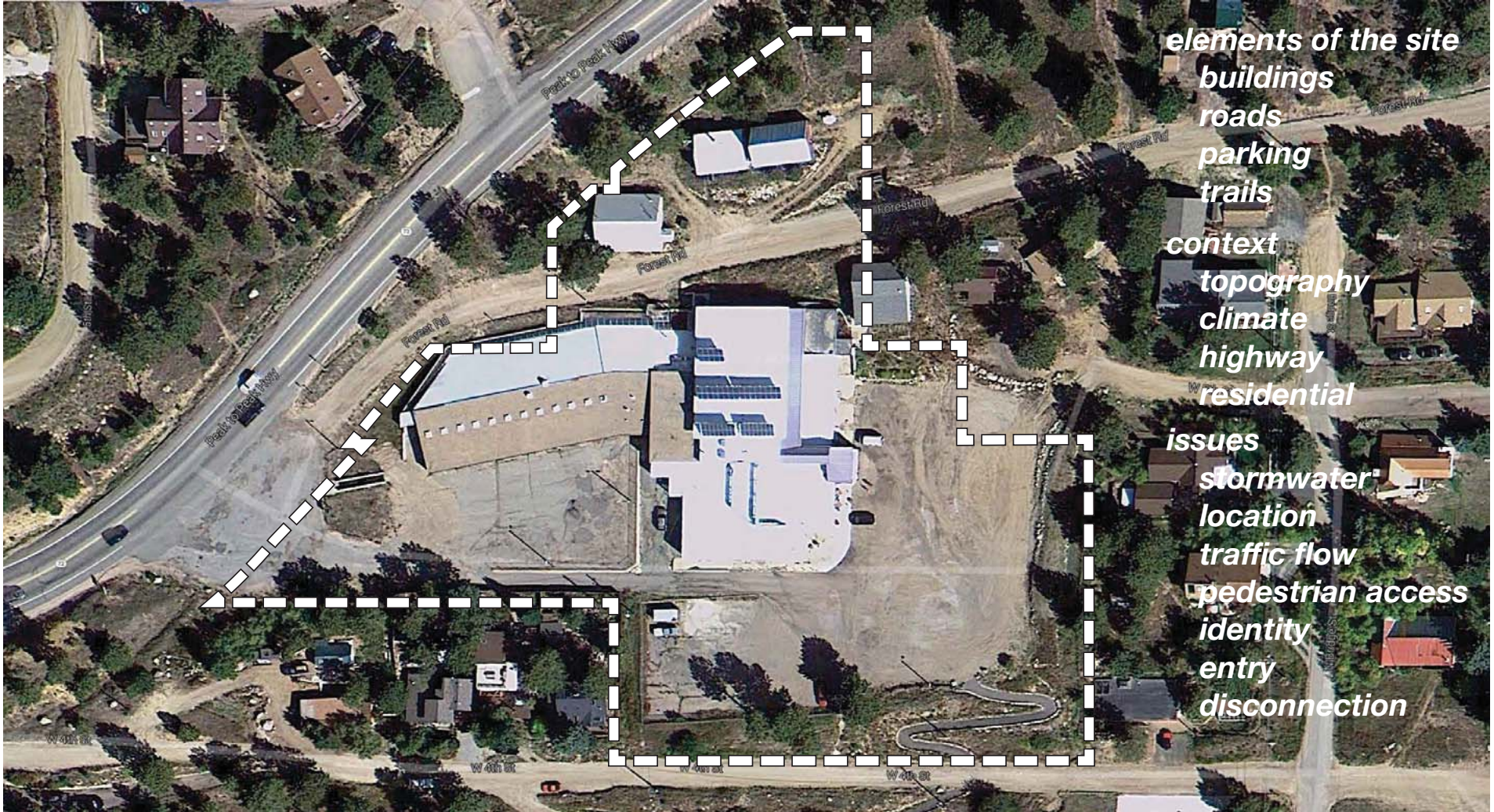


master site plan:

*an evolving, long-term document
establishing the framework and key elements
of a site reflecting a clear vision
created and adopted in an open process.
It synthesizes civic goals and the public's
aspirations for a project,
giving them form and organization,
and defines a realistic plan for implementation.*





elements of the site
buildings
roads
parking
trails

context
topography
climate
highway
residential

issues
stormwater
location
traffic flow
pedestrian access
identity
entry
disconnection



NEDERLAND
COMMUNITY CENTER

- *create a place that reflects the character of Nederland and resonates with the community to engender the enjoyment, appreciation, care and support of the site*
- *create a place that is inclusive, benefiting the entire community, town residents, those from the surrounding area and people along the Front Range seeking a mountain meeting venue*
- *create a place that is environmentally sustainable*

goals and objectives of the project

- *capture, retain and release storm water in a controlled manner to minimize impacts on downstream properties, reduce erosion, improve water quality and recharge groundwater systems.*
- *minimize paved, roofed and other impervious surfaces*
- *provide flexible space for a wide variety of community needs*
- *minimize energy usage*
- *maximize resource conservation: water, energy, materials*
- *create an efficient and safe organization of vehicular circulation systems*

